



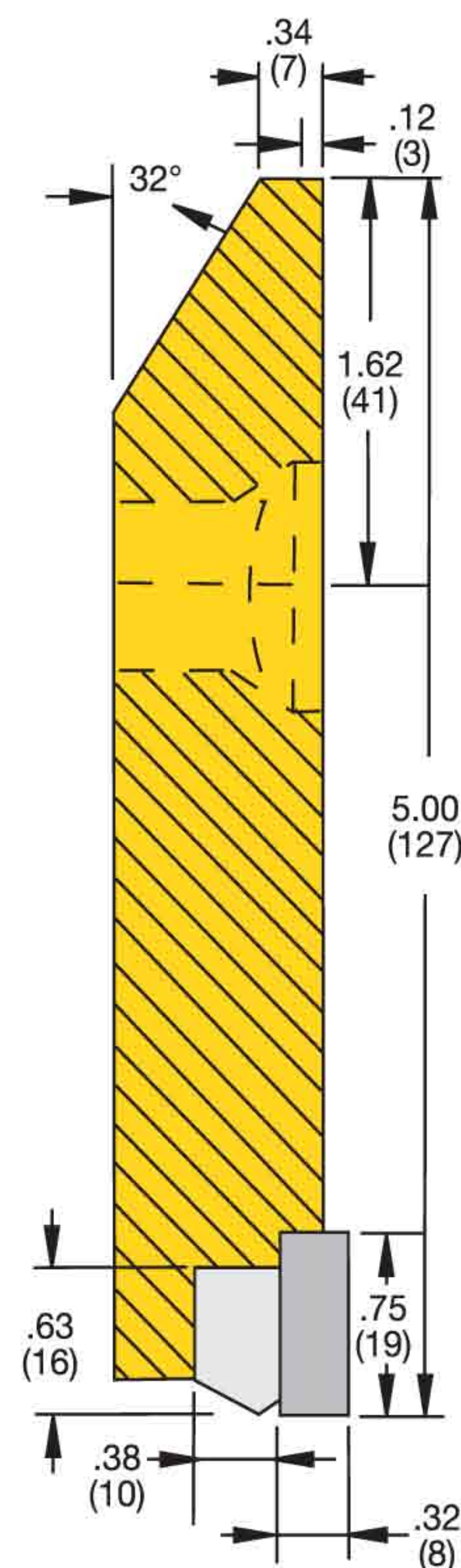
Dual-Carbide Blades

Dual-Carbide Blades with a New Improved Braze and a More Wear-Resistant Steel Body!

70% Stronger Braze!

... engineered specifically to reduce costs associated with replacement part inventory, downtime, labor, and overall operations!

- Available exclusively through Kennametal – the only manufacturer of this innovative blade.
- Outlasts imbedded carbide granule-style blades.
- Features a universal bolt-hole and a variety of available lengths for maximum compatibility.
- Dual-carbide tungsten insert blades, specifically designed for high-abrasion and low-impact applications to stay straight; maintain a sharp, clean edge; and stop crowning:
 - First insert is formulated with our proprietary macrocrystalline carbide grade for toughness and impact resistance and mounts on the front of blade.
 - Second insert is made from a wear-resistant carbide grade and mounts directly behind the first insert to resist wear caused by blade down pressure and abrasion.
- Backed by a comprehensive warranty program.



Kennametal mining grade carbide insert on face resists impact and erosion.

Kennametal wear grade carbide insert here resists deterioration caused by blade downpressure and abrasion.

Dual-Carbide Blade Sizes/Ordering Information

(Blades beveled at top to fit grader moldboard)

Thickness in. (mm)	Width in. (mm)	Length in. (mm)	New Order Code	Old Part Number	Bolt Dia. in. (mm)	Weight lbs. (kg.)
.875 (22)	5 (127)	24 (610)	1011871	904981999	.625 (16)	32 (15)
.875 (22)	5 (127)	36 (914)	1011872	904982000	.625 (16)	48 (22)
.875 (22)	5 (127)	48 (1219)	1011875	904982001	.625 (16)	63 (29)
.875 (22)	5 (127)	36 (914)	1011879	904982003	.750 (19)	48 (22)
.875 (22)	5 (127)	48 (1219)	1011877	904982002	.750 (19)	63 (29)
.875 (22)	5 (127)	60 (1524)	1311238	N/A	.625 (16)	77 (35)

When ordering, please provide Order Code and be sure to specify hole size and moldboard length.

Specifications

- Steel holder:** SAE 1040-1045, hot-rolled
- Carbide inserts:**
- Front .750-inch (19mm) high, impact resistant
 - Rear .625-inch (16mm) high, wear resistant
- Braze:** A high-strength alloy material

Bolting Recommendations

To reduce the likelihood of blade chatter and/or failure, use Grade 8, Number 3 head plow bolts and nuts.

Hole-Punch Data

- Standard 6-inch (152mm) on centers
- .687-inch (17mm) square, countersunk to receive .625-inch (16mm) diameter plow bolts;
- OR** .812 -inch (21mm) square, countersunk to receive .750-inch (19mm) diameter plow bolts
- Holes accurately punched to fit ANY make/model of grader

Dual-Carbide Blade Accessories

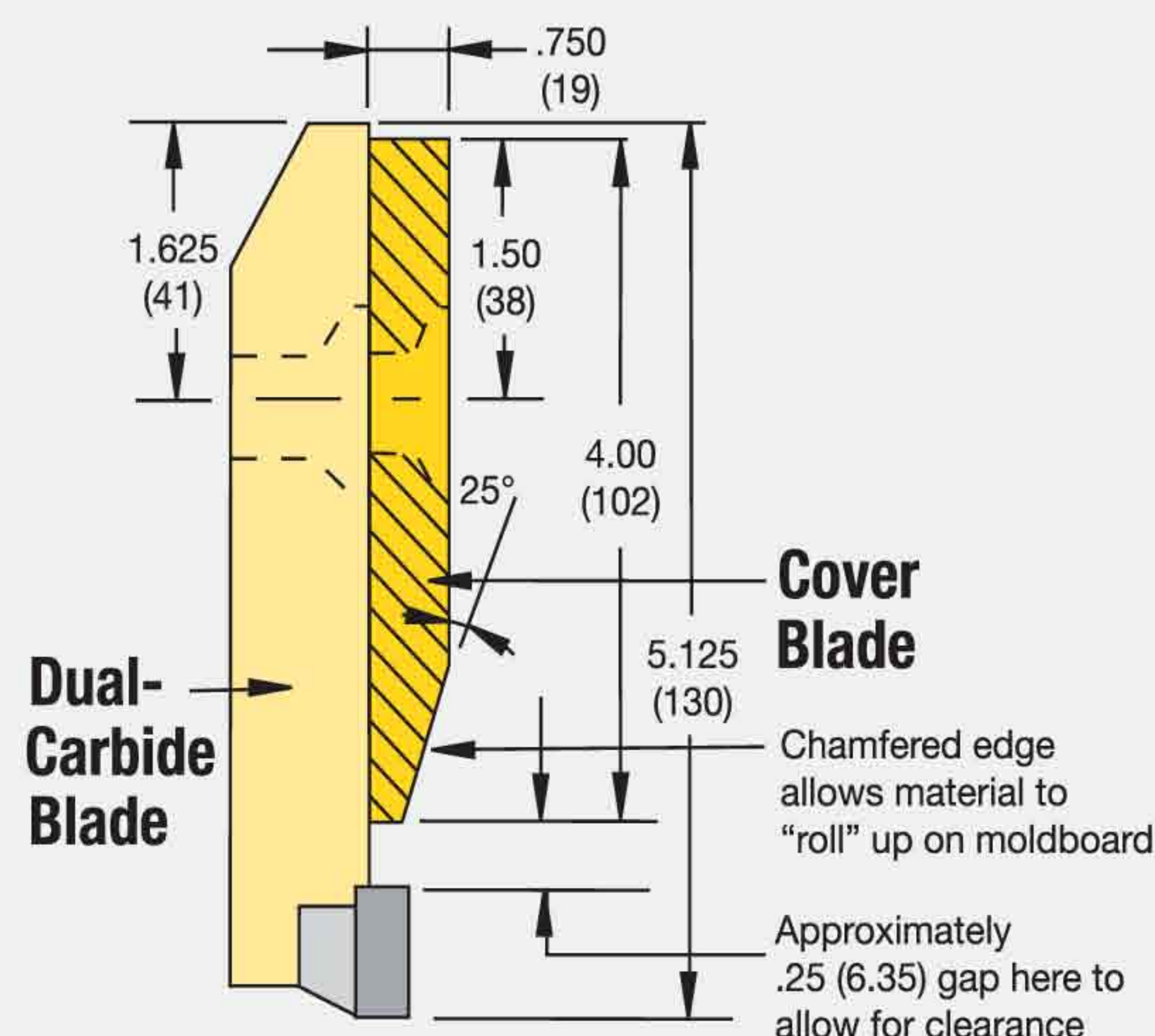
Improved! New DCI Cover Blades — Now 3/4-inch (19mm) Thick!

When operating in extremely abrasive conditions, our optional cover blades provide added wear resistance for the non-carbide portion of the blade. The chamfered bottom edge inhibits any interruption of the rolling action of bladed road material. The cover blades are attached using the same bolts as those used for attaching the dual-carbide blade below it, simply by increasing the length of the bolts by a .500-inch (13mm). It's not necessary to use end protectors when cover blades are used. Fabricated from wear-resistant steel, these cover blades are available in the following sizes:

3/4" (19mm) Thick Dual Carbide Cover Blades Ordering Information

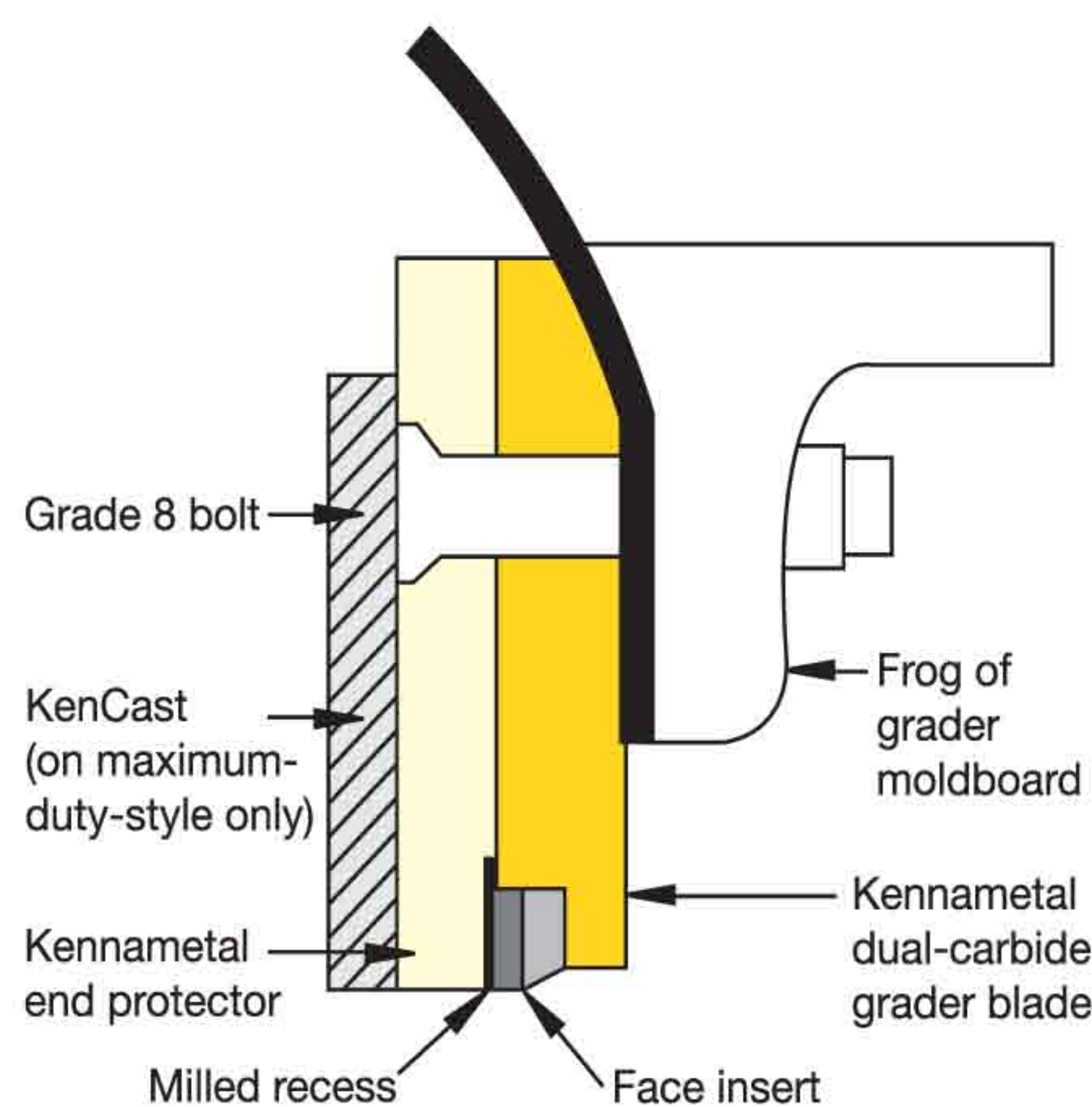
Thickness in. (mm)	Width in. (mm)	Length in. (mm)	Order Code	Old Part No.*	Bolt Dia. in. (mm)
.750 (19)	4 (102)	36 (914)	2492564	1156908	.625 (16)
.750 (19)	4 (102)	48 (1219)	2478681	1156910	.625 (16)
.750 (19)	4 (102)	36 (914)	2872390	1156911	.750 (19)
.750 (19)	4 (102)	48 (1219)	2872388	1156912	.750 (19)

* Replaces old 1/2-inch (13mm) thick blade part numbers.



End Protectors

Kennametal highly recommends the use of our carbide or standard steel end protectors. Our end protectors avoid impact damage by covering the last 9-inches (229mm) of each of the end blades on either side of the moldboard. They are installed over the dual-carbide blade, using the same bolt holes (as shown in the diagram). An installation guide is available upon request.



End Protectors for Dual-Carbide Blades Ordering Information

Standard Steel Type		
New Order Code	Old Part Number	Description
1011918	904009820	Standard for .625 (16) bolts
1011919	904009821	Standard for .750 (19) bolts



Carbide Type		
New Order Code	Old Part Number	Description
1012555	909260265	Maximum-duty right for .625 (16) bolts
1012556	909260266	Maximum-duty right for .750 (19) bolts
1012560	909260270	Maximum-duty left for .625 (16) bolts
1012561	909260271	Maximum-duty left for .750 (19) bolts

MHL SYSTEMS

www.mhlsystems.com

33 E columbia Ave - salt lake city, ut 84171-1147 800 999 7517 fax 801 268 1948

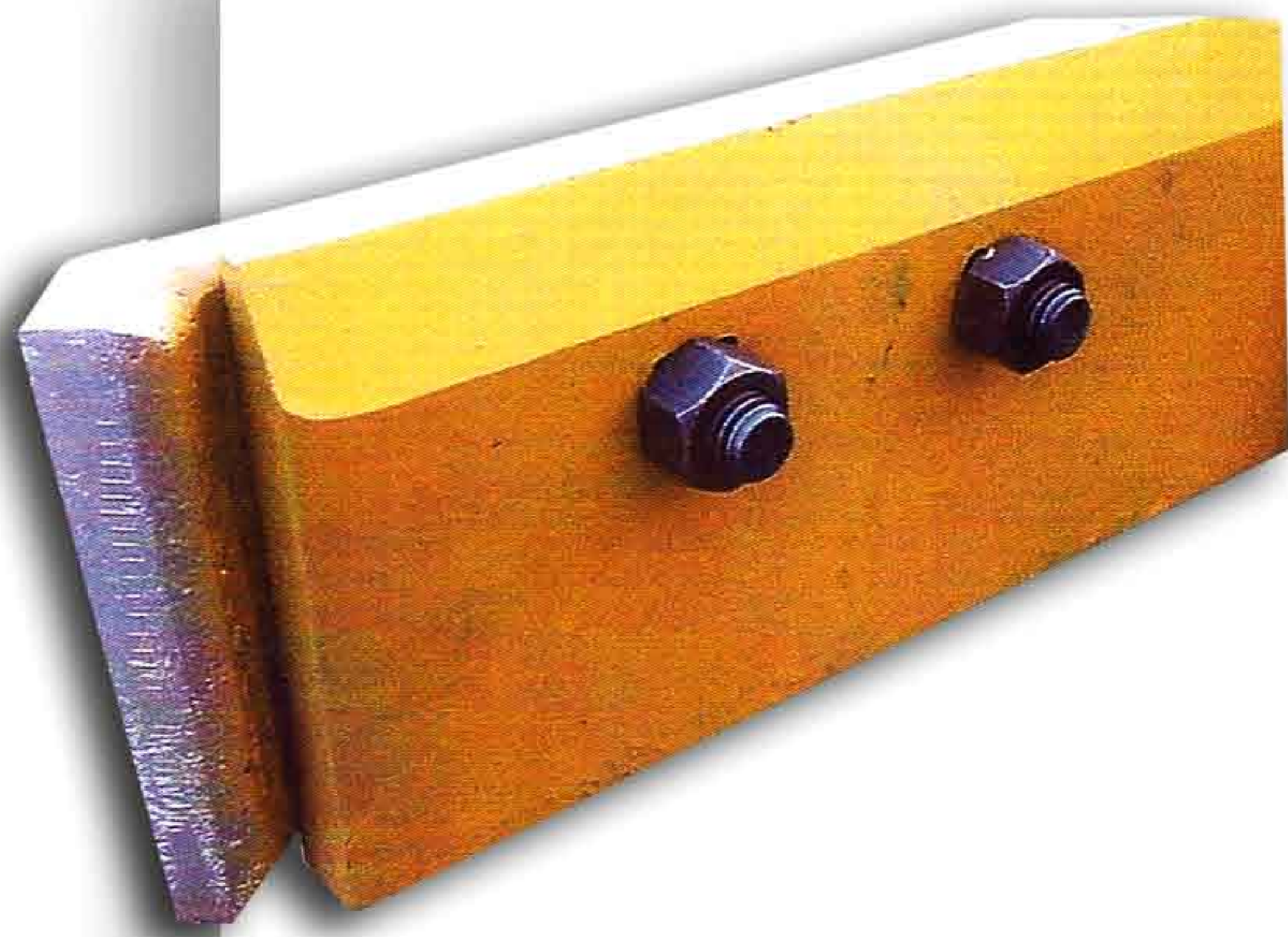


Photo:

Rear View of Carbide Casting End Guard Showing Wrap - Around Design for Complete Protection of Outside Edge of Carbide Tungsten Insert Grader Blade.

Vertical Carbide Casting Set at [45] Degree Angle for Cutting When Needed

[100%] Warranty Against Breakage

Photo:

Embedded Horizontal Casting x 6" Long Vertical Casting x 5" High - Angled to Cut and Protect Outside Edge of Carbide Blades.

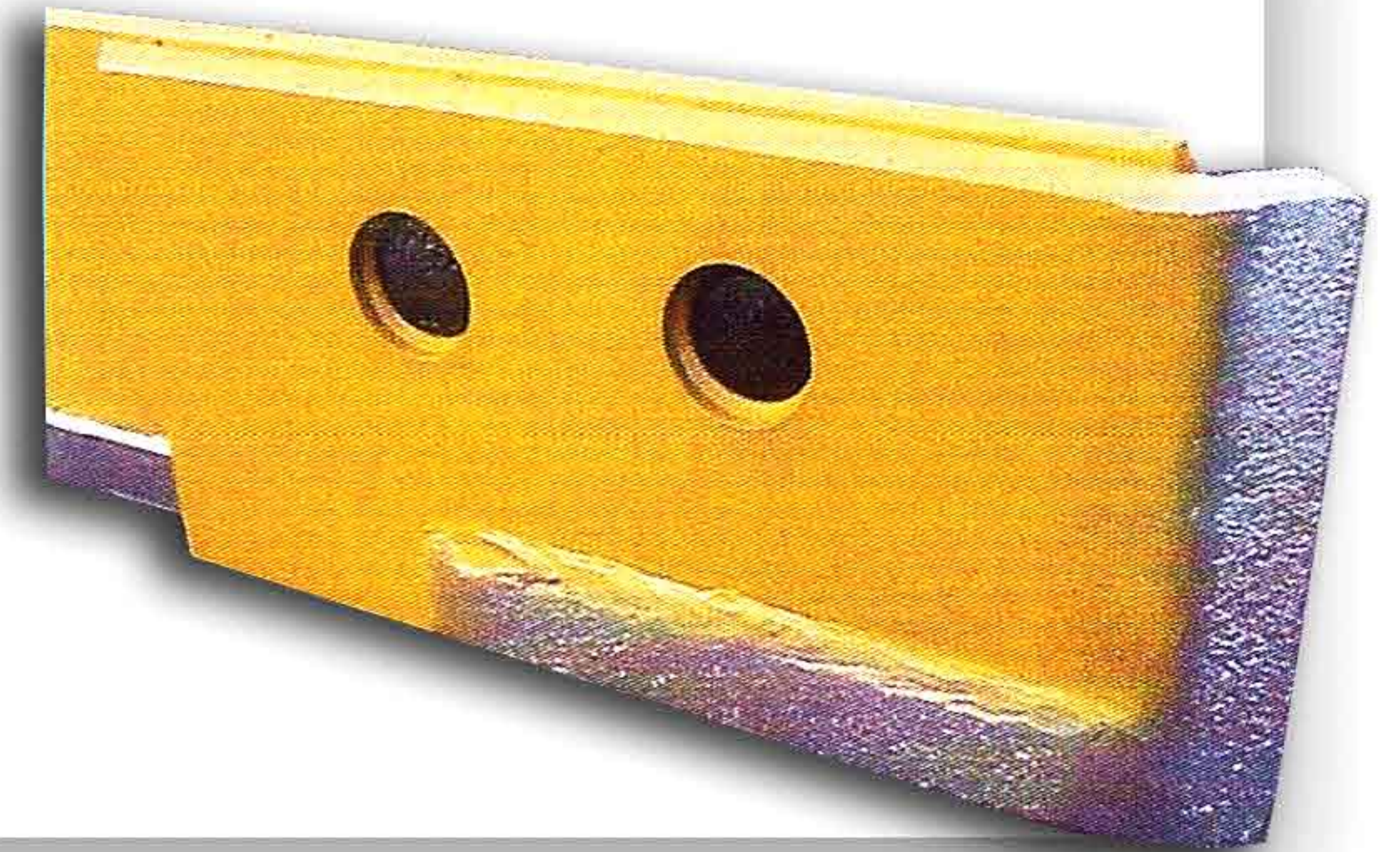


Photo:

Beveled Edge for Flow of Material